



# Operations Quick Start Guide

2024 • DisasterAWARE Pro® • Version 8

Page

**1**

**Initial Setup**

**3**

**Monitor**

**4**

**Assess**

**6**

**Respond**

**7**

**Advanced Features**

## ACOUNT SUPPORT

Contact:  
**disaster@pdc.org**

## ADDITIONAL RESOURCES

See  **HELP**  
in DisasterAWARE

(e.g. full user guide, online training, etc.)



## Minimum System Requirements

### Supported Browsers



**Google Chrome**  
version 51+



**Firefox**  
version 47+



**Safari**  
version 9+

#### Connection Speed



**Broadband internet** with **4Mbps** download speed  
  
(or) **4G mobile** internet connection

#### Monitor Display Resolution



**1024 x 768**  
(Optimal Resolution)  
  
**1920 x 1200**  
(Best Experience)

## Additional Settings

- **Turn on cookies:** Used for session management. Typically on by default.
- **Allow PDC Pop-ups:** Many features and functions are delivered this way.
- **Add “[disasteraware.org](https://disasteraware.org)” and “[pdc.org](https://pdc.org)”** to your browser’s list of **trusted websites**.
- **Check your browser’s Zoom setting:** Set to 100%



## Access DisasterAWARE Pro

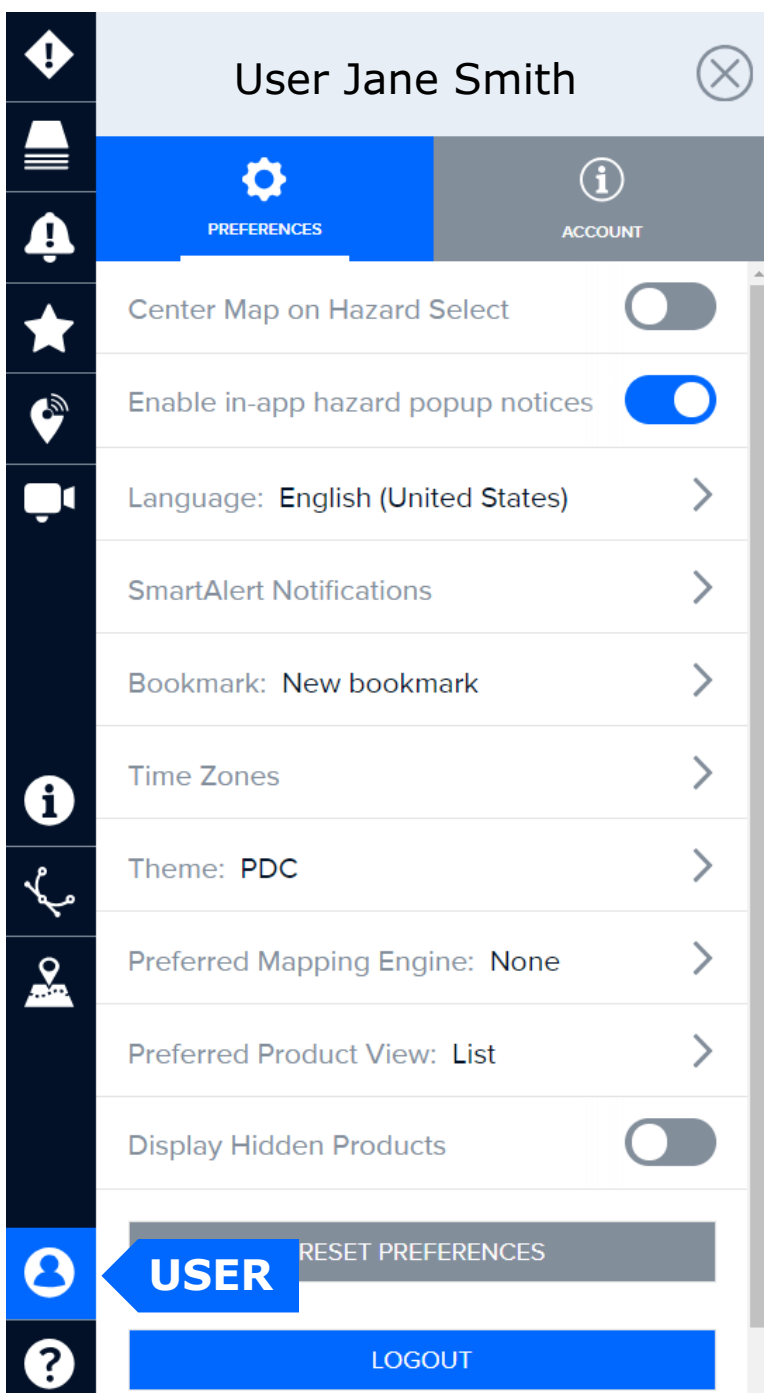
Log In here ► <https://disasteraware.pdc.org>

Need an account? Select [Request Access](#)

# INITIAL SETUP



## Customize Your User Preferences



Go to **User** ▶ **Preferences** to change your DisasterAWARE settings at anytime.

### Key Preferences to consider customizing

- In-app hazard notices
- Language
- Time Zones
- Bookmark (default Map View)

### Setup your default Map View



Navigate your **Map** to the area you wish to see each time you log in.



Open the **Layers** panel and display any data you wish to see by default.



Then go to the **Bookmarks** panel to create a Bookmark.



In the **Bookmarks** panel, select the options button at the top-right.



Then select **Add Bookmark** and follow the promptings to create.



Return to your **User Preferences** and select that Bookmark as default.

## Change Password



Go to **User** ▶ **Account** and select that option to change your password.



## Respond Faster with Smart Alert™

DisasterAWARE is your ready-made 'Early Warning for All' System

### Select Delivery



**SMS:** Receive hazard alerts on your mobile device.

**Email:** This can be separate from your registration email.

**PRO TIP**



**Enter a group email to alert your team,** watch office, operations center, and more.

### Hazard Severity



#### General severity descriptions (see User Guide for more):

- Warning:** Adverse or significant impacts to population are imminent or occurring. Act Now.
- Watch:** Conditions are possible for adverse or significant impacts to population. Monitor closely and be prepared to act.
- Advisory:** Conditions are possible for limited or minor impacts to population. Exercise caution.
- Information:** Conditions are possible for limited or minor impacts to population.

### Focused Alerting



By default, your Smart Alert Area is set to **Global**.

**Define Smart Alert Areas** to ensure you receive alerts only for hazards that threaten the places you care about or areas you are interested in.

**Enhance the monitoring and protection of specific assets** (e.g. buildings, team and resource locations) via the **Assets feature**.

## Enhanced Monitoring and Protection of Assets



# ASSESS

Assess quickly using the Hazard tooltip ▶

**TROPICAL CYCLONE**  
Hurricane - Irma (Response Support)  
Reported: 6 years ago  
Updated: 5 years ago

Products Info Layers Event Brief



## Products

Latest updates from PDC and partners.



## Info

Quick summary of the hazard event.



## Layers

Key layers related to that hazard type.



## Event Brief

As available. See User Guide for Event Brief thresholds.



## EARTHQUAKE - 6.8 - 51 KM WSW OF OUKAÏMEDENE, MOROCCO

EVENT STATUS AS OF 16 NOVEMBER 2023 19:32 (UTC)



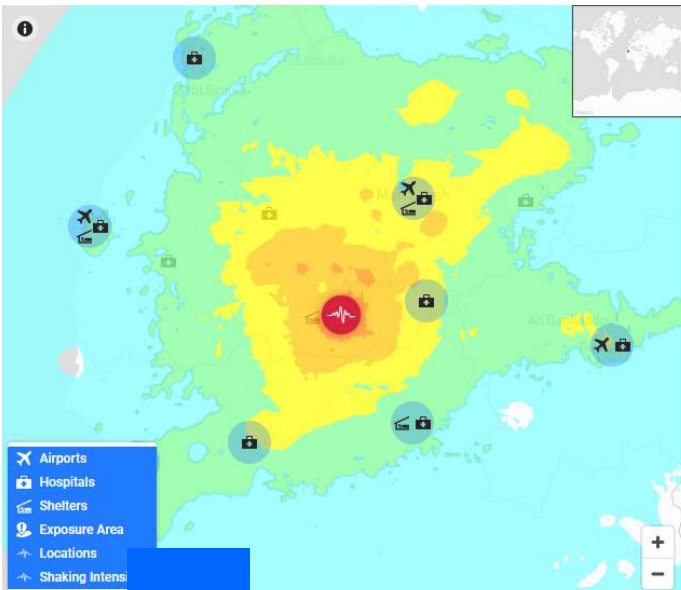
1 COUNTRY AFFECTED

SET FILTER BY COUNTRY

HAZARD EXPOSURE

RISK PROFILE

ORGANIZATIONS & ACTIVITIES



## POPULATION EXPOSED

ESTIMATED POPULATION EXPOSED

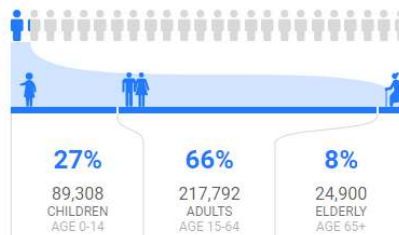
**6.64 MILLION**

ESTIMATED HOUSEHOLDS EXPOSED

**1.44 MILLION**

ESTIMATED VULNERABLE POPULATION EXPOSED

**332,000**



ESTIMATED HOSPITALS EXPOSED

**67**

ESTIMATED SCHOOLS EXPOSED

**113**

## CAPITAL EXPOSED

## BREAKDOWN OF KEY NEEDS

FOR EXPOSED VULNERABLE POPULATION

**697 MILLION**  
CALORIES PER DAY

**996,000**  
LITERS OF WATER PER DAY

**33,200**  
100-LITER WASTE BINS

**1.14 MILLION**  
SQUARE METERS OF SHELTER

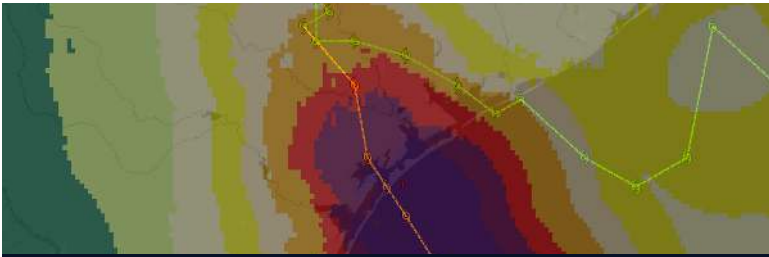
## Quickly answers:

- **What** happened?
- **Where** was it?
- **How bad** was it?
- **What actions** do I need to take?

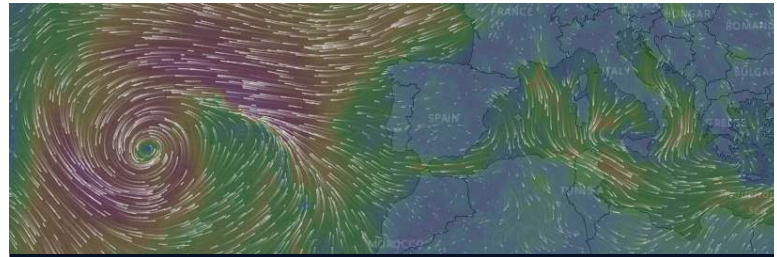




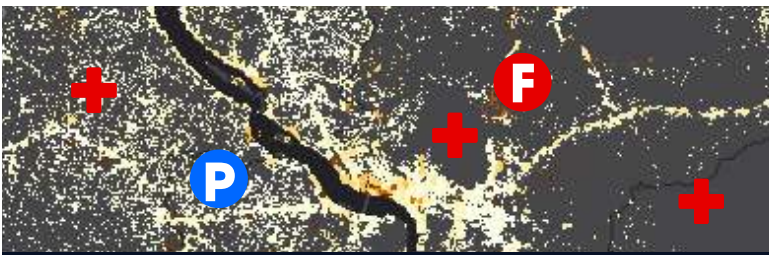
## Access Key Layers



Hazard Data



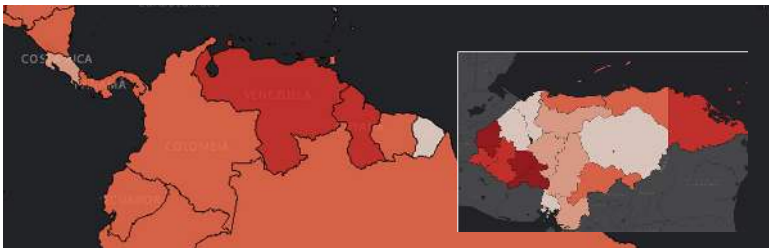
Observations and Forecasts



Population and Critical Infrastructure



Background Maps



Risk and Vulnerability Assessments



Access the **Legend** for information on symbols, colors, and icons displayed. (See top-right corner)



# Risk Intelligence & Advanced Analytics

Enhance your assessments with PDC's integrated **Risk and Vulnerability Assessment** layers.

**35**

Countries assessments completed or underway at the national and sub-national levels through PDC's NDPBA program ([www.pdc.org/NDPBA](http://www.pdc.org/NDPBA)). See Layers ▶ Regional Data ▶ Region ▶ Country ▶ Risk and Vulnerability

**195**

Countries assessed annually through PDC's Global RVA project. See Layers ▶ Main ▶ Risk and Vulnerability



## Shared Situational Awareness



### Bookmarks

**Bookmark and share combinations of layers and drawings for quick access and shared situational awareness across your team and partners.**

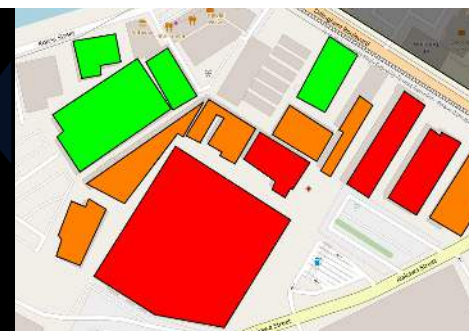
Select **i** next to the Bookmark you wish to share and then the **SHARE** option to copy its **link** . (Account required to log in and view.)



### Drawings

**Receiving updates from teams on the ground?**

Quickly add that information as **drawings** and **text** to your map. Then **bookmark** and **share the link** with others.



### Edit

## Import Data

Enhance your assessments by adding your own layers.

(Go to Layers ▶ Edit ▶ Add Layer)



### Print

## Create Maps

Share products featuring your current map view.

(Located in the top-right corner)



### Products

## Products

Keep an eye out for the latest products from the response community.

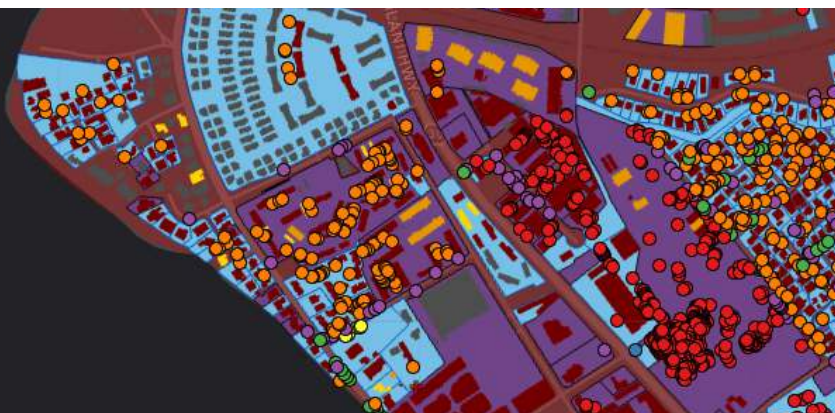


### Layers

## Response Data

Access data for major response events.

(Layers ▶ Disaster Response Events)



## PRO TIP

When not responding, conduct **training and exercises** using past **Disaster Response Event** layers in DisasterAWARE.





# Leverage Advanced Features



## Live Ground Conditions

Available for select locations.

Select a camera from the list or the map.

Enable up to 10 **Active Cameras** for maximum monitoring.



## Media Reports

Filter by **keyword** in the options.

Leverage the **Scan** tool to filter further on the map.

A light blue world map with white outlines of continents and countries, serving as a background for the top half of the page.

**Better solutions.  
Fewer disasters.**

# **safer world.**

**1305 N Holopono Street  
Suite 2, Kihei, HI 96753**

**P: (808) 891-0525  
F: (808) 891-0526**

**[www.pdc.org](http://www.pdc.org)  
[info@pdc.org](mailto:info@pdc.org)**

 **@PDC\_Global**

 **/PDCGlobal**

 **/pacificdisastercenter**